

FLOWMATIC (F.M) ART.8100

GUNMETAL PRESSURE REDUCING VALVES

FEATURES AND BENEFITS

- Spring-controlled diaphragm-operating type.
- Reduce both static (no flow) and running pressures.
- All gunmetal BS1400 LG2 Heavy Duty Construction.
- For maximum inlet pressure up to 16 bar (250 psi).
- Testing pressure 24 bar (350 psi).
- With female screw ends to BS21.
- Other type of connections available on request.
- With adjustable spring for large range of outlet pressure (1 bar/15 psi to 14 bar/200 psi) and ratio of 10% to 80% of inlet pressure.
- Large flow rate/ low head loss.
- With heavy duty reinforced-rubber diaphragm and stainless steel seat suitable for portable water and aggressive medium.
- Very reliable and long life design.
- Sizes from 25mm (1") to 80mm (3").

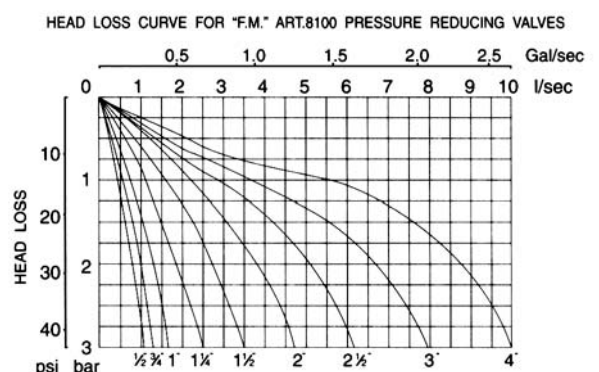
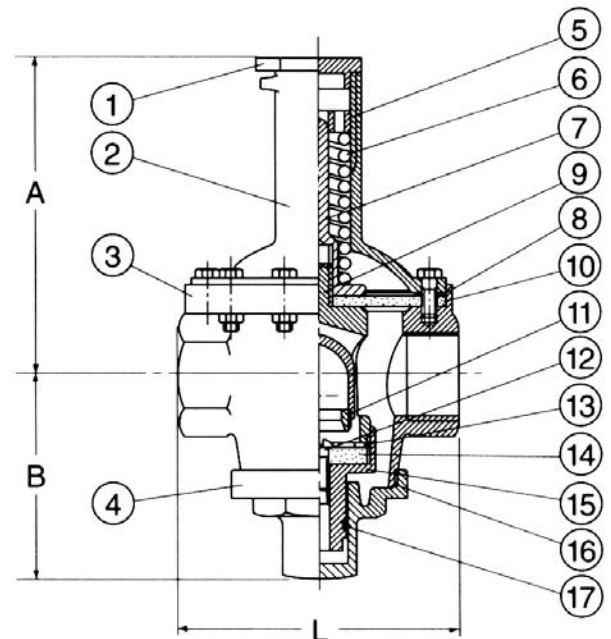
Note: It is best that the reduced pressure is set at 25% to 75% of inlet pressure at both static (no flow) and flow conditions. The reduced downstream flow pressure will limit the maximum flow allowable due to headloss. There are many other factors which should be considered in choosing a suitable pressure reducing device. Water hammer effects, sizing, max. and min. flow rates, cavitation and water quality should be considered. Please refer to manufacturer's recommendation and installation/ maintenance manual.

SPRING SELECTION

OUTLET PRESSURE RANGE	1-6 BAR	5-10 BAR	8-12 BAR	10-16 BAR
COLOUR OF SPRING	BLACK	RED	GREEN	YELLOW

PARTS LIST AND DIMENSIONS

PART NO.			DESCRIPTION	MATERIAL			
1			BONNET PLUG	COPPER ALLOY BS1400 DCB3, ALT. GUNMETAL BS1400 LG2			
2			UPPER BONNET	GUNMETAL BS1400 LG2			
3			BODY	GUNMETAL BS1400 LG2			
4			LOWER BONNET	GUNMETAL BS1400 LG2			
5			RING NUT	COPPER ALLOY BS2874 CZ121 ALT. GUNMETAL BS1400 LG2			
6			SPRING	HIGH-GRADE STEEL. CHROME PLATED ALT. STAINLESS STEEL BS970 Pt.4 (13% Cr)			
7			SPRING GUIDE	COPPER ALLOY BS1400 DCB3, ALT. GUNMETAL BS1400 LG2			
8			WASHER RING	COPPER, ALT. HIGH-GRADE SHEET FIBRE			
9			BRIDGE	GUNMETAL BS1400 LG2			
10			DIAPHRAGM	HIGH-GRADE HEAVY-DUTY REINFORCED RUBBER/NBR			
11			SEAT	STAINLESS STEEL BS970 GR.304/316			
12			COMPENSATION SCREW	STAINLESS STEEL BS970, ALT. GUNMETAL BS1400 LG2			
13			DISC WASHER	GUNMETAL BS1400 LG2			
14			DISC	HIGH-GRADE RUBBER / NBR			
15			DISC HOLDER	GUNMETAL BS1400 LG2			
16			BONNET O-RING	HIGH-GRADE RUBBER / NBR			
17			DISC HOLDER	HIGH-GRADE RUBBER / NBR			
SIZE		DN25	DN32	DN40	DN50	DN65	DN80
A		116	123	170	184	200	203
B		82	92	110	119	130	137
L		110	130	152	178	190	200



As a continuous research of product development, patterns are liable to be modified as improvements are introduced. Drawings, pressures and sizes, although accurate at the moment of going to press, should therefore be considered as indicative information only.