

2012 EDITION



YAMAMOTO'S

**PRESSURE GAUGES
THERMOMETERS**



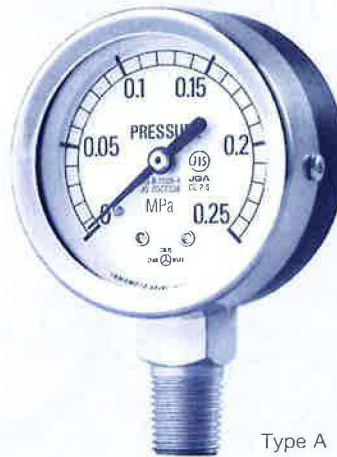
YAMAMOTO KEIKI MFG.CO.,LTD.

PRESSURE GAUGES

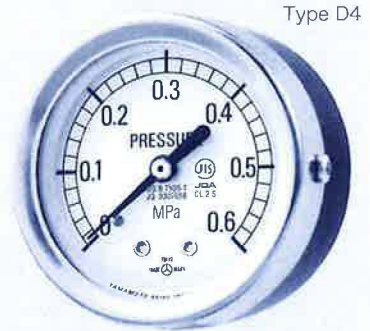
SMALL PRESSURE GAUGE

Pressure gauge suitable for use with all types of small and lightweight equipment and units.

- Size : 40 φ / 50 φ
- Pressure range :
Pressure gauge 40 φ : 0 ~ 2.5MPa (0 ~ 25kg/cm²)
50 φ : 0 ~ 6MPa (0 ~ 60kg/cm²)
Vacuum gauge
-0.1 ~ 0MPa (76cmHg ~ 0cmHg)
- Shape of casing : Standard case, Type A / Type D4
- Connecting thread : 40 φ ...R1/8
50 φ ...R1/4 (R1/8)
- Accuracy : ± 2.5% F.S.



Type A

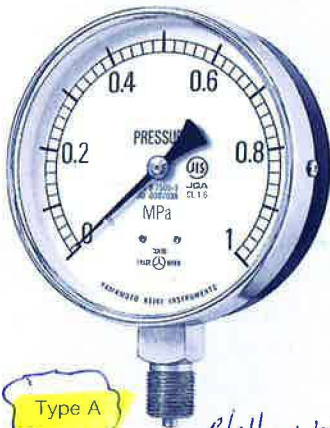


Type D4

ORDINARY PRESSURE GAUGE

A wide manufacturing range of Bourdon tube pressure gauges meeting JIS, B7505 standard, including pressure gauge, vacuum gauge and compound gauge, are available.

- Classification (mark) :
Ordinary type for steam (M) / Heatproof type (H) / Vibration-proof type (V) / Vibration-proof type for steam (MV) / Heat and vibration-proof type (HV)
- Size : 60 φ / 75 φ / 100 φ / 150 φ / 200 φ
- Pressure range :
Pressure gauge 0 ~ 100MPa (60 φ : to 25MPa, 75 φ : to 60MPa)
[0 ~ 1000kg/cm² (60 φ : to 250kg/cm² 75 φ : to 600kg/cm²)]
Vacuum gauge -0.1 ~ 0MPa (76cmHg ~ 0cmHg)
Compound gauge -0.1 ~ 2.5MPa (76cmHg ~ 25kg/cm²)
- Shape of casing : Standard case, closed case
Type A / Type B / Type DF / Type DM
- Connecting thread : 60 φ ...1/4, 75 φ ...3/8, 100 φ · 150 φ ...3/8, 1/2, 200 φ ...1/2G
- Accuracy : ± 1.6% F.S.
- Materials for the parts touching liquid : BS, SUS316



Type A

Chiller Water



Type B



Type DC (Middle rim)



Type DF (Front rim)

Pressure gauge with "Adjustable red pointer"

It is possible to set the adjustable red pointer at expected pressure value as target by turning the external thumb screw.



Pressure gauge with "Max.Hand"

The maximum hand remains at the highest pressure attained until reset by turning the external thumb-screw.



Compound gauge

Both pressure and vacuum are measured.