

## Test Report

TITLE : Testing of Flanges  
 REPORT NO. : J 29027A-B  
 DESCRIPTION OF SAMPLE<sup>1</sup> : EN1092-1:2007+A1:2013 PN16 Carbon Steel Welding Flange  
 SAMPLE SUBMITTED BY<sup>1</sup> : Hoi Luen Hardware Co., Limited  
 Shop A, G/F., King Centre, 23 Dundas Street,  
 Mong Kok, Kowloon  
 METHOD OF TESTS : BS EN 1092-1: 2007 + A1: 2013 & BS EN 10028-1: 2017  
 PERIOD OF TESTS : 05 Jun., 2023 to 14 Jun., 2023

<sup>1</sup> – Information below provided by client

**RESULTS:** - (apply only to the sample tested)

### SUMMARY OF RESULTS

Test	Remark
1.1 Dimensions – DN25	C
1.2 Dimensions – DN350	C
2 Chemical Composition	C

#### 1.1 Dimensions – DN25

DN	Variable	Unit	Measured	Required	Remark
25	PN rating	---	16	---	---
	Outside diameter	mm	114.3	115 ± 2.0	C
	Diameter of bolt circle		85.5	85 ± 1.0	C
	Thickness		15.0	16 +2.0/-1.3	C
	Diameter of bolt hole		14.0	14 +1.0/-0	C
	Number of bolt holes		nos.	4	4
Overall result					C

#### 1.2 Dimensions – DN350

DN	Variable	Unit	Measured	Required	Remark
350	PN rating	---	16	---	---
	Outside diameter	mm	520.0	520 ± 3.0	C
	Diameter of bolt circle		470.0	470 ± 1.5	C
	Thickness		36.0	35 ± 1.5	C
	Diameter of bolt hole		26.0	26 +2.5/-0	C
	Number of bolt holes		nos.	16	16
Overall result					C

**REPORT NO.: J 29027A-B**

2. Chemical Composition

BS EN 10028-1: 2017: P235GH 1.0345

Elements	DN 25	DN 350	Required	Remark
Carbon	0.13	0.12	Max. 0.16	C
Silicon	<0.005	<0.005	Max. 0.35	C
Manganese	0.7	0.8	0.6 – 1.2	C
Phosphorus	<0.005	<0.005	Max. 0.025	C
Sulphur	<0.005	<0.005	Max. 0.020	C
Al total	0.08	0.11	≥ 0.020	C
Chromium	<0.005	<0.005	Max. 0.30	C
Copper	<0.005	<0.005	Max. 0.30	C
Molybdenum	<0.005	<0.005	Max. 0.08	C
Niobium	<0.005	<0.005	Max. 0.01	C
Nickel	<0.005	<0.005	Max. 0.30	C
Titanium	<0.005	<0.005	Max 0.04	C
Vanadium	<0.005	<0.005	Max. 0.02	C
Overall result				C

Date: 23 Jun., 2023

Authorized Signature: \_\_\_\_\_

Nutek Systems is a testing agency, accepted by the Water Supplies Department, for testing water supply fittings.

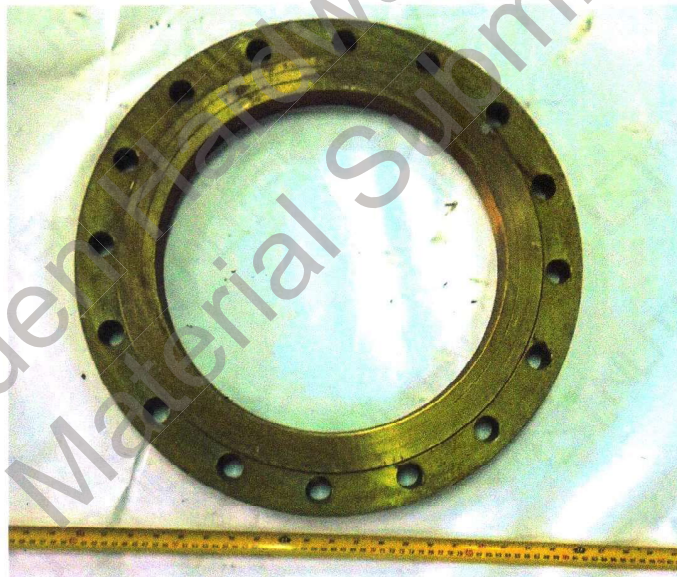
**CHUNG Siu Yu, Alan**  
(Engineer)



**Figure 1 – DN 25**



**Figure 3 – DN 350**



### General Note(s)

**Definitions:**

C – conformance

NC – non-conformance

**- End of report -**