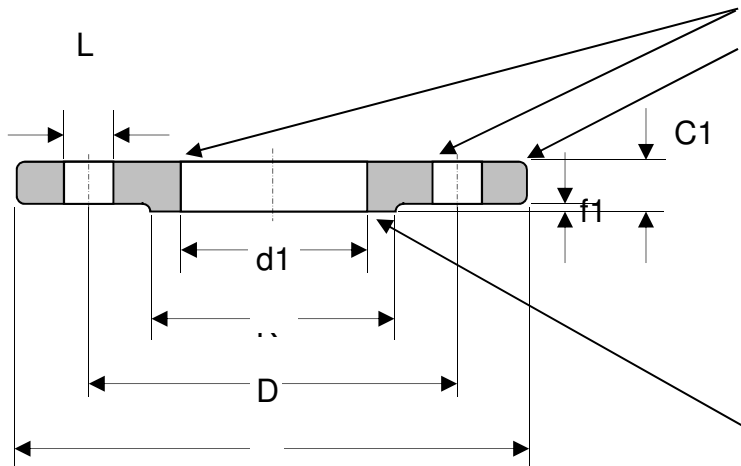


Hoi Luen Harwdare Co., Ltd.

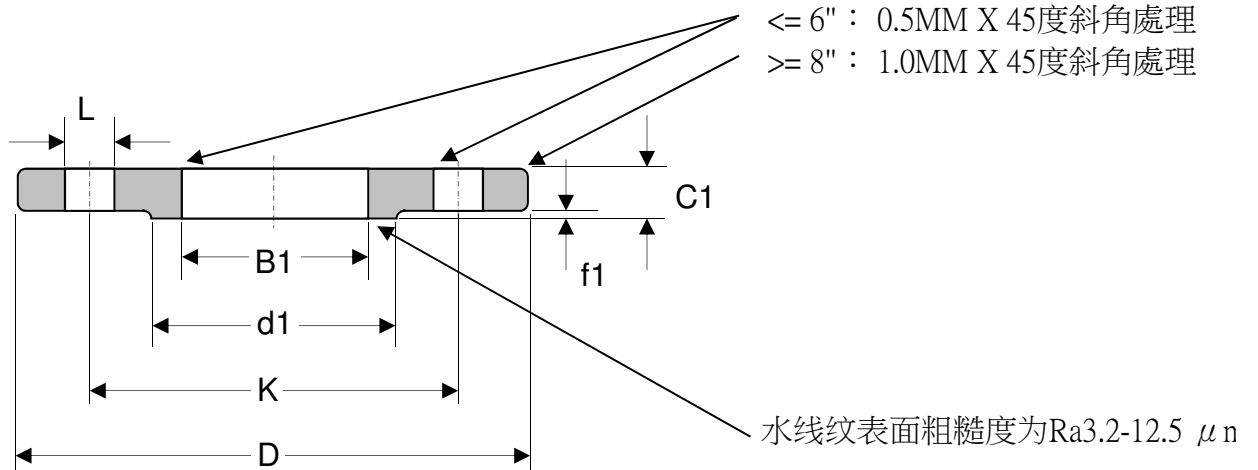
≤ 6" : 0.5MM X 45度斜角處理
 ≥ 8" : 1.0MM X 45度斜角處理



水线纹表面粗糙度为Ra3.2-12.5 μm.

BS4504 Code 101 PN6								
DN	D	K	L	No. of Holes	B1	C1	Raised Face	
							d1	f1
10	75	50	11	4	18.0	12	35	2
15	80	55	11	4	22.0	12	40	2
20	90	65	11	4	27.5	14	50	2
25	100	75	11	4	34.5	14	60	2
32	120	90	14	4	43.5	16	70	2
40	130	100	14	4	49.5	16	80	3
50	140	110	14	4	61.5	16	90	3
65	160	130	14	4	77.5	16	110	3
80	190	150	18	4	90.5	18	128	3
100	210	170	18	4	116.0	18	148	3
125	240	200	18	8	141.5	20	178	3
150	265	225	18	8	170.5	20	202	3
200	320	280	18	8	221.5	22	258	3
250	375	335	18	12	276.5	24	312	3
300	440	395	22	12	327.5	24	365	4
350	490	445	22	12	359.5	26	415	4
400	540	495	22	16	411.0	28	465	4
450	595	550	22	16	462.0	30	520	4
500	645	600	22	20	513.5	30	570	4
600	755	705	26	20	616.5	32	670	5

Hoi Luen Hardware Co., Ltd.



BS4504 Code 101 PN10								
DN	D	K	L	No. of Holes	B1	C1	Raised Face	
							d1	f1
10	90	60	14	4	18.0	14	40	2
15	95	65	14	4	22.0	14	45	2
20	105	75	14	4	27.5	16	58	2
25	115	85	14	4	34.5	16	68	2
32	140	100	18	4	43.5	18	78	2
40	150	110	18	4	49.5	18	88	3
50	165	125	18	4	61.5	20	102	3
65	185	145	18	4	77.5	20	122	3
80	200	160	18	8	90.5	20	138	3
100	220	180	18	8	116.0	22	162	3
125	250	210	18	8	141.5	22	188	3
150	285	240	22	8	170.5	24	212	3
200	340	295	22	8	221.5	24	268	3
250	395	350	22	12	276.5	26	320	3
300	445	400	22	12	327.5	26	370	4
350	505	460	22	16	359.5	28	430	4
400	565	515	26	16	411.0	32	482	4
450	615	565	26	20	462.0	36	532	4
500	670	620	26	20	513.5	38	585	4
600	780	725	30	20	616.5	42	685	5

海聯五金有限公司 Hoi Luen Hardware Company Limited

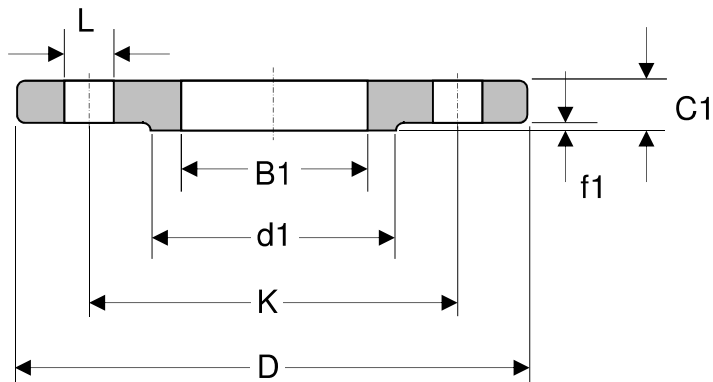
Tel: (852) 23887282 Fax: (852)27709032

Email: Sales@hoiluenhardware.com Website: www.hoiluenhardware.com

Address: Shop A, G/F., King Centre, No.23 Dundas Street, Kowloon, Hong Kong

"HL" Flange

BSEN1092-1 PN16



DN	D	K	L	No. of Holes	B1	C1	Raised Face	
							d1	f1
10	90	60	14	4	18.0	14	40	2
15	95	65	14	4	22.0	14	45	2
20	105	75	14	4	27.5	16	58	2
25	115	85	14	4	34.5	16	68	2
32	140	100	18	4	43.5	18	78	2
40	150	110	18	4	49.5	18	88	3
50	165	125	18	4	61.5	20	102	3
65	185	145	18	4	77.5	20	122	3
80	200	160	18	8	90.5	20	138	3
100	220	180	18	8	116.0	22	158	3
125	250	210	18	8	141.5	22	188	3
150	285	240	22	8	170.5	24	212	3
200	340	295	22	12	221.5	26	268	3
250	405	355	26	12	276.5	29	320	3
300	460	410	26	12	327.5	32	378	4
350	520	470	26	16	359.0	35	438	4
400	580	525	30	16	411.0	38	490	4
450	640	585	30	20	462.0	42	550	4
500	715	650	33	20	513.5	46	610	4
600	840	770	36	20	616.5	52	725	5

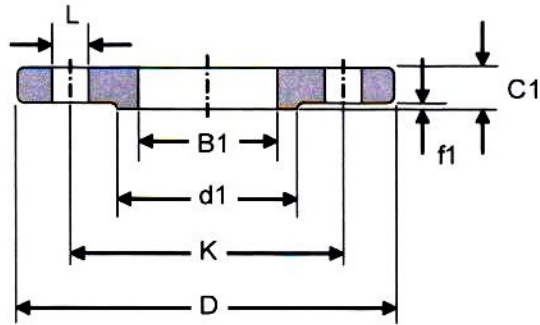
Hoi Luen Hardware Company Limited

Tel: (852) 23887282

Fax: (852)27709032

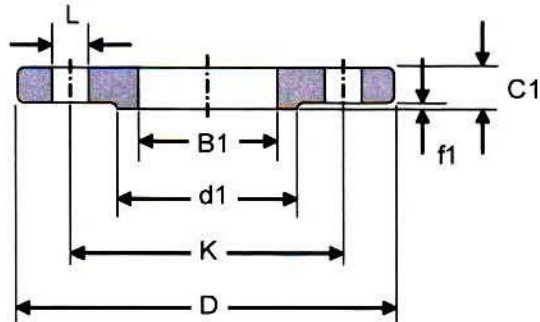
Email: Sales@hoiluenhardware.com

Website: www.hoiluenhardware.com



01B RF

CODE 101 (PN25)										
DN	D	K	L	No. of Holes	B1	C1	FLAT FACE		Raised Face	
							KG	d1	f1	KG
10	90	50	14	4	18.00	14	0.60	40	2	0.53
15	95	65	14	4	22.00	14	0.67	45	2	0.59
20	105	75	14	4	27.50	16	0.94	58	2	0.85
25	115	85	14	4	34.50	16	1.11	68	2	1.01
32	140	100	18	4	43.50	18	1.82	78	2	1.67
40	150	110	18	4	49.50	18	2.08	88	3	1.83
50	165	125	18	4	61.50	20	2.73	102	3	2.44
65	185	145	18	8	77.50	22	3.48	122	3	3.17
80	200	160	18	8	90.50	24	4.32	138	3	3.98
100	235	190	22	8	116.00	26	6.07	162	3	5.61
125	270	220	26	8	141.50	28	8.19	188	3	7.60
150	300	250	26	8	170.50	30	10.27	216	3	9.58
200	360	310	26	12	221.50	32	14.29	278	3	13.47
250	425	370	30	12	276.50	35	20.15	335	3	19.08
300	485	430	30	16	327.50	38	26.61	395	4	25.01
350	555	490	33	16	359.50	42	41.78	450	4	39.61
400	620	550	36	16	411.00	46	55.23	505	4	52.55
450	670	600	36	20	462.00	50	64.59	555	4	61.76
500	730	660	36	20	513.50	56	84.00	615	4	80.83
600	845	770	38	20	616.50	68	127.25	720	5	122.16



01B RF

CODE 101 (PN40)										
DN	D	K	L	No. of Holes	B1	C1	FLAT FACE		Raised Face	
							KG	d1	f1	KG
10	90	90	14	4	18.00	14	0.60	40	2	0.53
15	95	85	14	4	22.00	14	0.67	45	2	0.59
20	105	75	14	4	27.50	16	0.94	58	2	0.85
25	115	85	14	4	34.50	16	1.11	68	2	1.01
32	140	100	18	4	43.50	18	1.82	78	2	1.67
40	150	110	18	4	49.50	18	2.08	88	3	1.83
50	185	125	18	4	61.50	20	2.73	102	3	2.44
65	185	145	18	8	77.50	22	3.46	122	3	3.17
80	200	160	18	8	90.50	24	4.32	138	3	3.98
100	235	190	22	8	116.00	26	6.07	162	3	5.61
125	270	220	26	8	141.50	28	8.19	188	3	7.60
160	300	250	26	8	170.50	30	10.27	218	3	9.56
200	375	320	30	12	221.50	36	17.93	285	3	17.03
250	450	385	33	12	276.50	42	29.26	345	3	27.95
300	515	450	33	16	327.50	48	44.59	410	4	39.63
350	580	510	36	16	359.50	54	62.07	466	4	59.81
400	660	585	39	16	411.00	60	89.65	535	4	85.56
450	685	610	39	20	482.00	66	91.70	660	4	88.62
500	755	670	42	20	513.50	72	120.33	615	4	116.47
600	890	795	48	20	616.50	84	189.52	735	5	183.16

While every effort has been made, to ensure that the information given on this page is accurate, not accept responsibility for any inaccuracies or misinterpretations of this data.