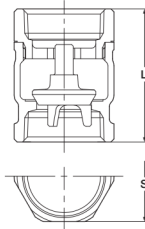


5K

BRONZE LIFT CHECK VALVE

Screwed cap, Lift type disc
Threaded ends to BS21 (JIS B0203)

W.O.G. non-shock 120°C (0.5 MPa)



Materials

Parts	Material
Body	Bronze
Cap	Brass (Size 1/2 & 3/4) Bronze (Size 1 to 2)
Disc	Dezincification Resistant Brass (Size 1/2 & 3/4) Bronze (Size 1 to 2)

⚠ Don't use for Flammable gas or Toxic gas.

Fig. VF

• Threaded end to BS21 (JIS B0203)

Dimensions

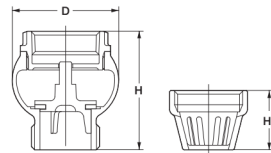
Nominal Size	inch	1/2	3/4	1	1 1/4	1 1/2	2	mm
	mm	15	20	25	32	40	50	
L		37	44	51	62	69	82	
S		24	30	36	45	52	63	

5K

BRONZE LIFT CHECK VALVE

Screwed cap, Lift type disc
Threaded ends to BS21 (JIS B0203) and parallel

Water 80°C (0.5 MPa)



Materials

Parts	Material
Body	Bronze
Cap	Bronze
Disc	NBR

⚠ Don't use for Flammable gas or Toxic gas.

Fig. FT

• Threaded end to BS21 (JIS B0203) and parallel

Fig. FTS

(Screen)
Threaded end to parallel

Dimensions

Nominal Size	inch	3/4	1	1 1/4	1 1/2	2	2 1/2	3	mm
	mm	20	25	32	40	50	65	80	
H		48	58	62	70	80	90	100	
D		41	52	62	70	83	102	116	
H1		25	29	32	35	43	50	51	

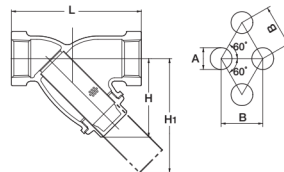
CLASS 150

Y-PATTERN STRAINER

Y-Pattern body, Screwed cap, 304 stainless steel screen
Threaded ends to BS21 (JIS B0203) or NPT, or solder joint ends.

W.O.G. non-shock 2.07 MPa (300 psi), Saturated steam pressure 1.03 MPa (150 psi) up to size 2*

*Contact KITZ for larger sizes



Materials

Parts	Material
Body	Bronze
Body cap	Brass
Screen	Type304 Stainless Steel

	A	B
3/8 to 2	1.4	2.4
2 1/2 to 3	1.5	2.5

⚠ Solder joint end valves should not be used in service where the temperature of line fluid is higher than the softening point of solder.

⚠ Don't use for Flammable gas or Toxic gas.

Fig. Y

• Threaded end to BS21 (JIS B0203)

Fig. AKY

• Threaded end to ASME B1.20.1

Fig. CY

• Solder joint ends to JIS B2011 / ASME B16.18 (2 1/2 & 3)

Dimensions

Nominal Size	inch	3/8	1/2	3/4	1	1 1/4	1 1/2	2	2 1/2	3	mm
	mm	10	15	20	25	32	40	50	65	80	
L		70	80	100	115	135	160	195	230	240	
L1 Solder			80	105	125	145	170	210	250	280	
H		44	49	57	70	82	98	121	148	180	
H1		61	68	83	105	124	149	188	216	267	